

Hear the truth™



J88/J88i HEADPHONES

Premium over-ear headphones with DJ-pivot ear cups

LEGENDARY SOUND SINCE 1946

**SERIOUS STYLE,
SUPERIOR
PERFORMANCE.**



For more than 60 years, JBL® engineers have designed the precise, naturally articulated sound found in cinemas, arenas and recording studios around the world. That legendary JBL sound is now available anywhere personal audio travels – with a look all its own.

JBL engineers take professional audio technology personally. And with the JBL J88 over-ear headphones, you can too. Drawing on years of expertise building some of the finest loudspeakers in the world, JBL engineers created lightweight, premium over-ear headphones with a fresh look and signature JBL sound. The JBL J88's massive drivers generate clarity and extended bass that competitive products simply can't touch. A unique, DJ-pivot mechanism lets you rotate either ear cup up to 180 degrees, which frees up one ear to hear outside sound. Bold styling, including brushed, stainless-steel ear-cup covers and headband, sets the JBL J88s apart, while a padded headband and ear cushions make these headphones as comfortable as they are powerful. Now uncompromising JBL sound goes wherever you go.

HIGHLIGHTS:

- Premium, high-performance drivers
- Closed-back design
- Rotating, 180-degree, DJ-pivot mechanism
- Single-side, detachable cable
- Cable-locking mechanism
- Rugged strain relief
- Apple three-button remote with microphone (J88i model)
- Bold design and premium finishing
- Padded carrying pouch



KEY FEATURES

J88/J88i HEADPHONES

Hear the truth™



JBL knows what it takes to bring accurate, powerful sound to a loudspeaker, no matter how small it is.

Premium, high-performance drivers



The JBL J88 headphones employ extensive 1-31/32-inch (50mm) drivers that produce outstanding frequency response (8Hz – 24kHz), superior clarity and bass that is pure, deep and accurate. As a result, the JBL J88 headphones outperform competitive products costing much more.

Closed-back design



The J88 headphones feature a closed-back design that blocks ambient noise and minimizes leaking. So outside noise stays outside, and your listening experience stays yours and yours alone.

Rotating, 180-degree DJ-pivot mechanism



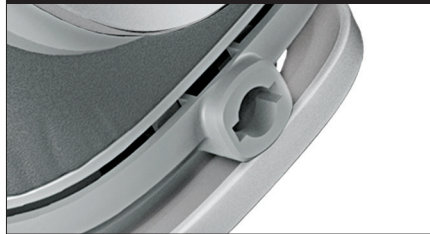
Sometimes you need to be aware of more than just your music. The JBL J88 earphone ear cups can rotate up to 180 degrees while you're wearing them so you can keep one ear on your audio and one ear on external sounds or conversations. The ear cups can rotate under the headband for storage and transport.

Single-side, detachable cable



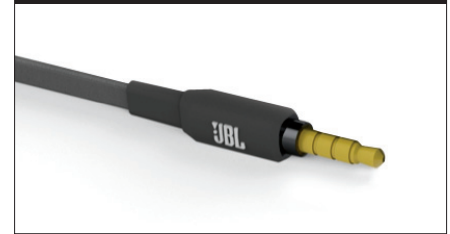
The JBL J88 headphones use a tangle-resistant, flat-elastomer cable that connects to just one ear cup, which further minimizes tangling. The cable detaches from the ear cup for added flexibility.

Cable-locking mechanism



To keep the detachable cable secure when it's connected, the JBL J88 headphones employ a unique, twist-lock mechanism. When you plug the cable into the ear cup, a simple twist locks it in to place.

Rugged strain relief



A strong, secure connection between the housing and cable is critical for both durability and sound quality. The JBL J88 headphones feature a rugged strain-relief connector that dampens vibration for enhanced acoustic performance.

Apple three-button remote with built-in microphone (J88i model)



Made specifically to use with the iPhone and iPod, the in-line remote offers familiar audio playback controls, and a built-in microphone lets you answer calls with remarkable clarity while leaving the headphones on.

Bold design and premium finishing



From the brushed, stainless-steel headband and ear-cup accents to the matte-black or -white housings, and from the embossed JBL logo to the cable that matches the ear pads, the JBL J88 headphones are designed to be as pleasing to the eyes as they are to the ears.

Padded carrying pouch



JBL sound is always worth protecting. The JBL J88 headphones come with a padded carrying pouch that keeps them safe from bumps and bruises when you're not wearing them.

SPECIFICATIONS

J88/J88i HEADPHONES

Hear the truth™



Deep, accurate bass that costlier products can't match.

What's included:

- 1 set of JBL J88 or J88i in-ear headphones
- 1 4-foot, 3-3/16-inches (1.3M), single-side, detachable, flat-elastomer cable
- 1 padded carrying pouch
- Owner's Manual
- Warranty card

JBL J88/J88i HEADPHONES

- Type: Over-ear style
- Premium driver: 1-31/32-inch (50 mm)
- Frequency response: 8Hz – 24kHz
- Impedance: 32Ω
- Flat-elastomer cable: 4' 3-3/16" (1.3M), single-side, detachable
- Plug: 1/8" (3.5mm) gold plated



Go online to register your purchase and access professional tips that'll show you just how serious sound can get.

www.jbl.com/registermyproduct



HARMAN International Industries, Incorporated
8500 Balboa Boulevard, Northridge, CA 91329 USA
www.jbl.com

© 2012 HARMAN International Industries, Incorporated. All rights reserved.
JBL is a trademark of HARMAN International Industries, Incorporated, registered in the United States and/or other countries. The "Hear the truth" logo is a trademark of HARMAN International Industries, Incorporated.
Apple, iPhone and iPod are trademarks of Apple, Inc., registered in the U.S. and other countries.
Features, specifications and appearance are subject to change without notice.